

## 835 NE Woods Chapel Road, 1st Floor

Lee's Summit, Missouri 64064

### ● PROPERTY DETAILS

- > Upscale Retail\Office Space
- > PRIME 1,391 SF For Lease on 1st Floor
- > Ample Parking Available for Customers & Employees
- > Great Location at 470 Hwy. & Woods Chapel Road
- > Exposure to High Traffic on Woods Chapel Road at the Entrance to Price Chopper



#### CONTACT INFORMATION

**Mike Atcheson**

3170 NE Carnegie Drive, Suite 400  
Lee's Summit, Missouri 64064

matcheson@ceahrealtors.com

**Phone:** 816-795-8100 ext. 100

**Fax:** 816-875-0051

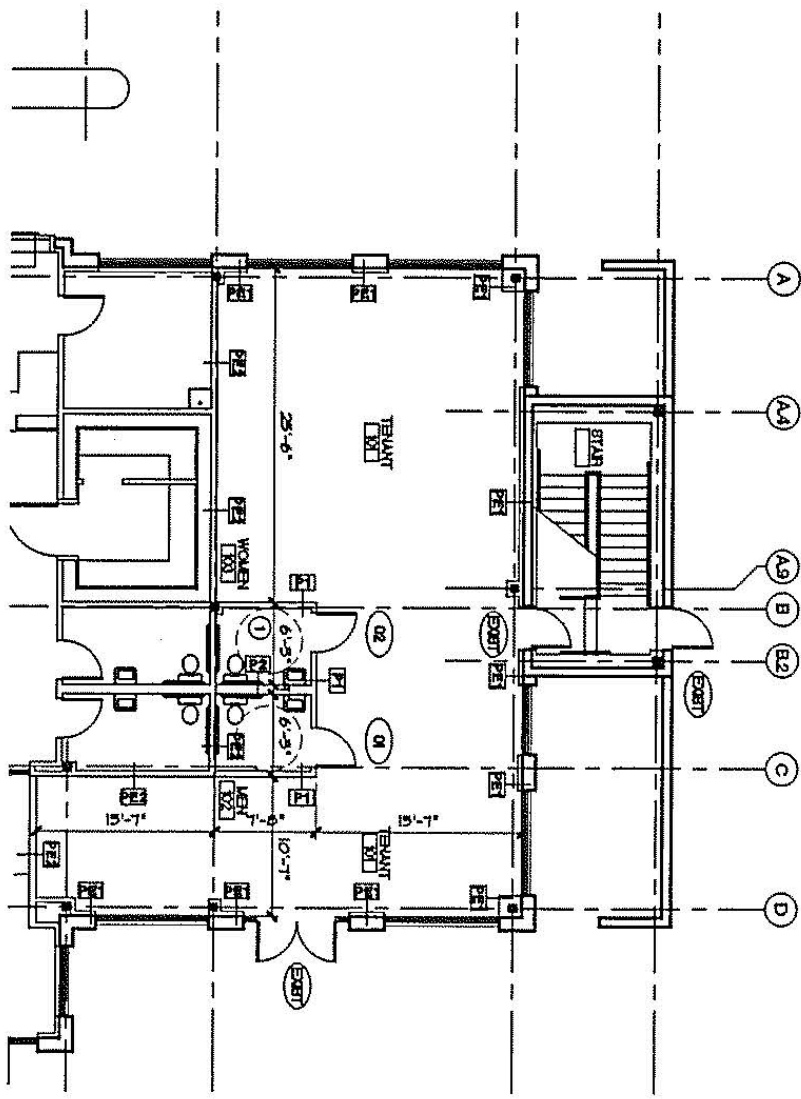
**www.ceahrealtors.com**

**COMMITTED TO CLIENT AND COMMUNITY**

**Brokerage • Consulting • Development • Management**



The information contained within this document has been obtained from sources deemed reliable. We cannot be responsible, however, for errors, omissions, prior sales or leasing, withdrawal from market or price changes. Seller and broker recommended tenant/purchaser's independence investigation as to all matters pertinent to tenant/purchaser's decision, without reservation.



**1 FLOOR PLAN**  
SCALE: 1/8" = 1'-0"

