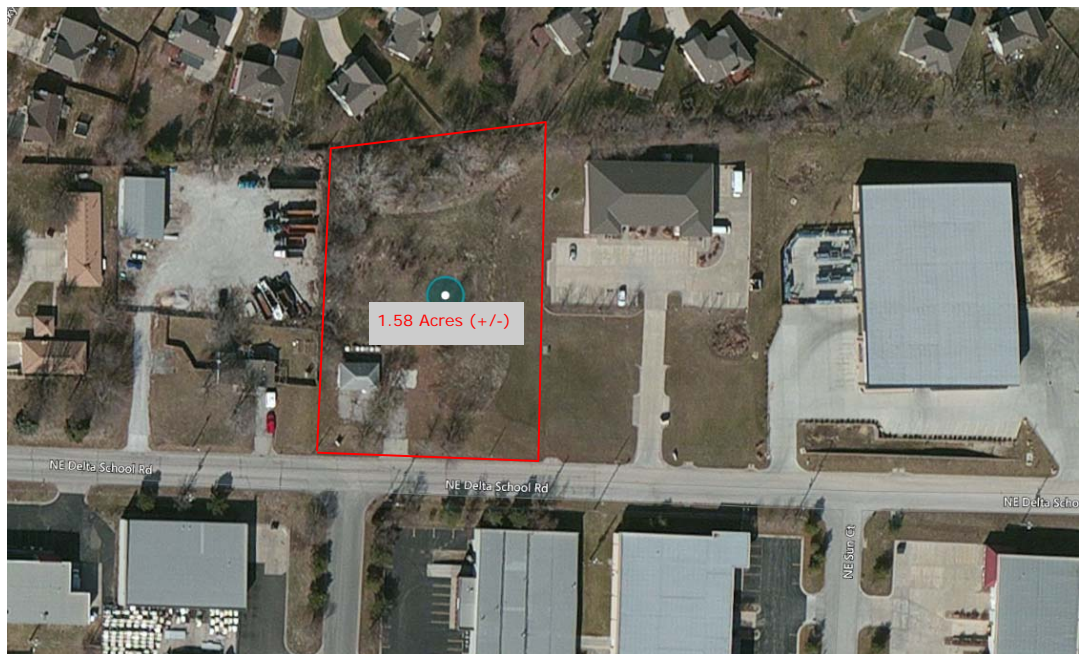


## 1120 NE Delta School Road

Lee's Summit, Missouri 64064

### ● PROPERTY DETAILS

- > 1.58 Acres (+/-)
- > PMIX Zoning
- > Easy Access
- > Near Lakewood Business Park
- > Mostly Level & Cleared
- > Small Existing Building
- > Priced at \$250,000



#### CONTACT INFORMATION

**Shannon E. Simmermon, P.C.**  
3170 NE Carnegie Drive, Suite 400  
Lee's Summit, Missouri 64064

[ssimmermon@ceahrealtors.com](mailto:ssimmermon@ceahrealtors.com)

**Phone:** 816-795-8100 ext. 117

**Cell:** 816-918-8940

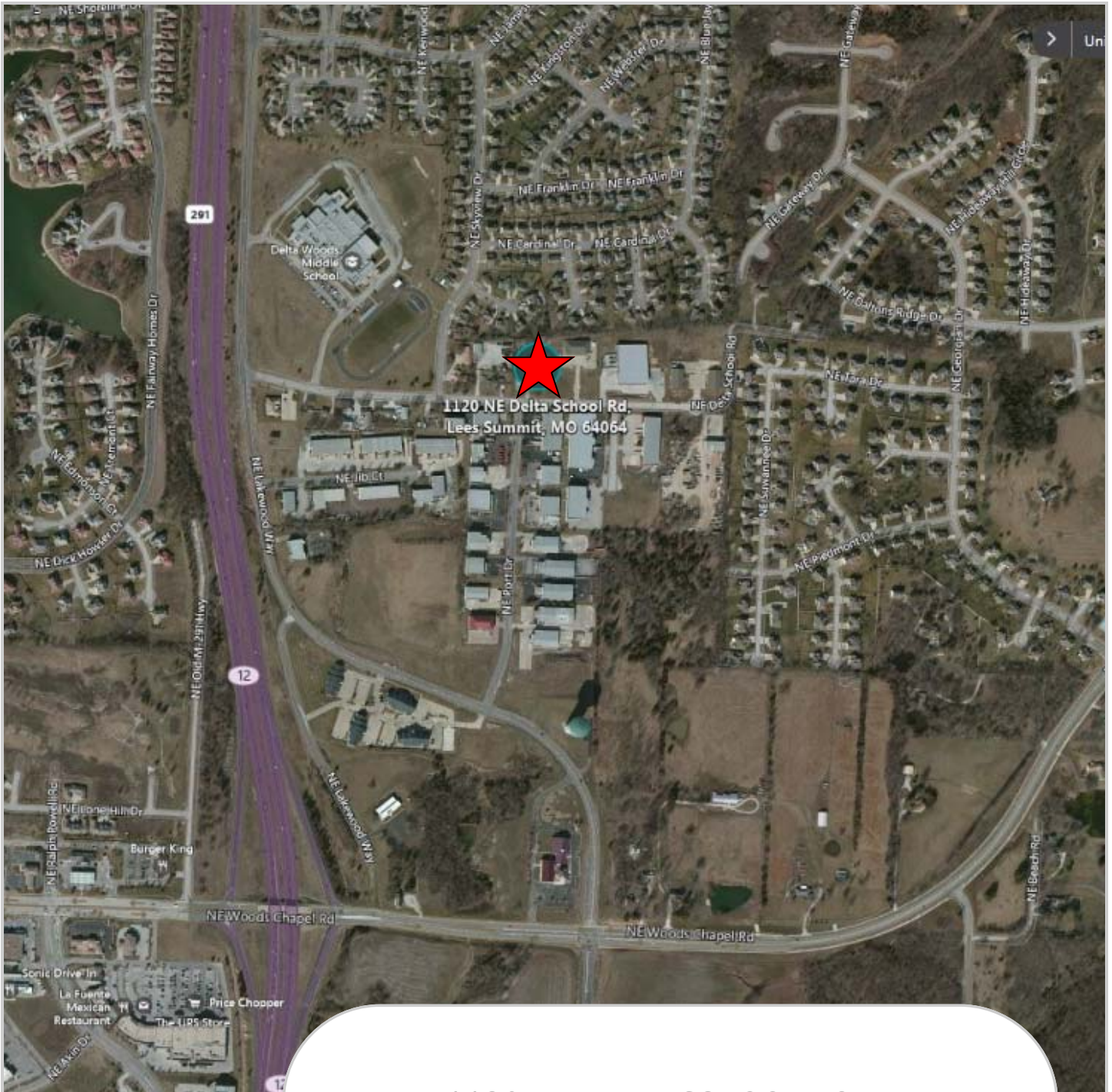
**Fax:** 816-875-0051

**[www.ceahrealtors.com](http://www.ceahrealtors.com)**

**COMMITTED TO CLIENT AND COMMUNITY**

**Brokerage • Consulting • Development • Management**





**1120 NE DELTA SCHOOL ROAD**